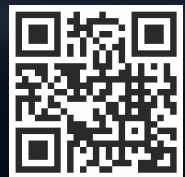




METAL WORKING INDUSTRY SENSORS

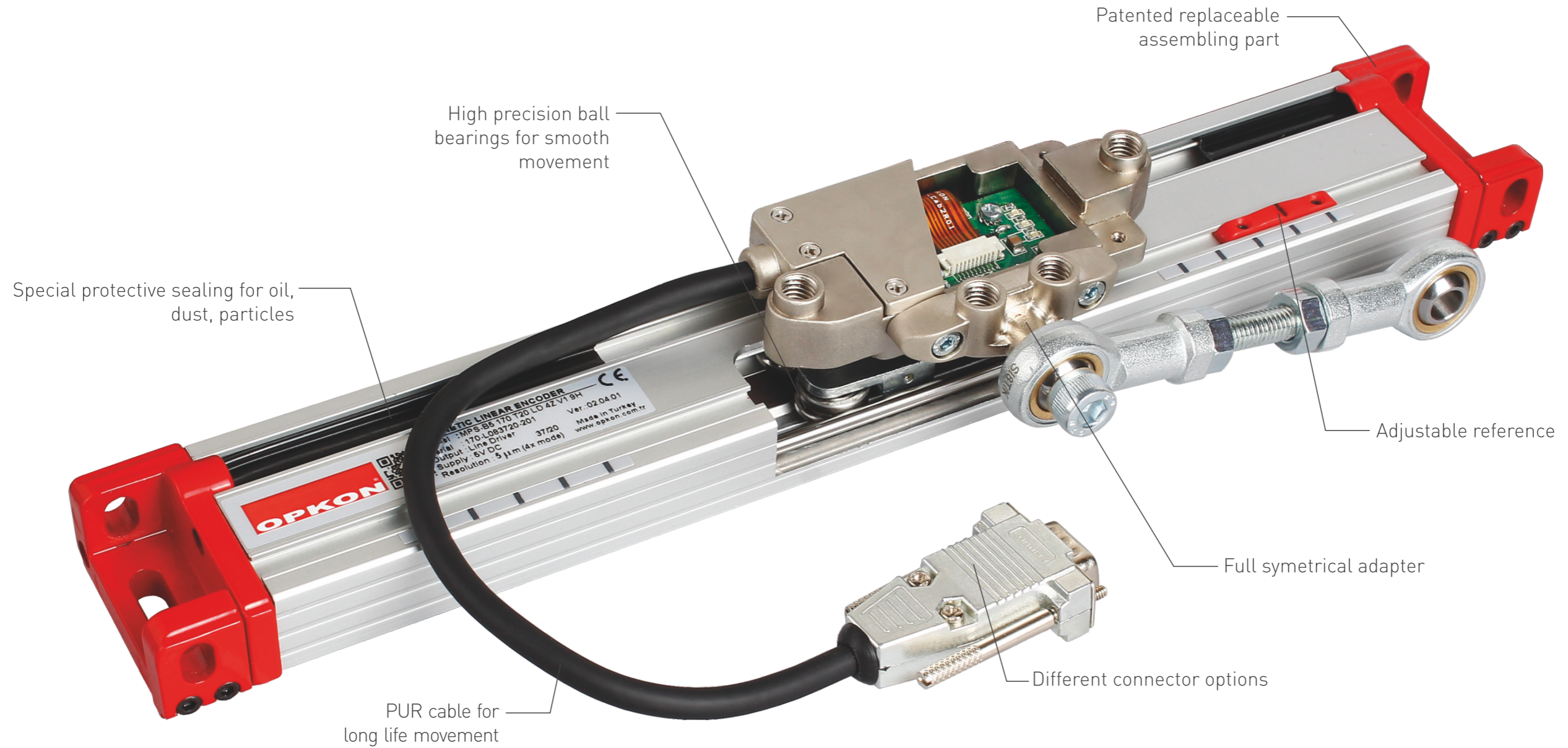


www.opkon.com.tr

MPS

Magnetic Linear Encoders

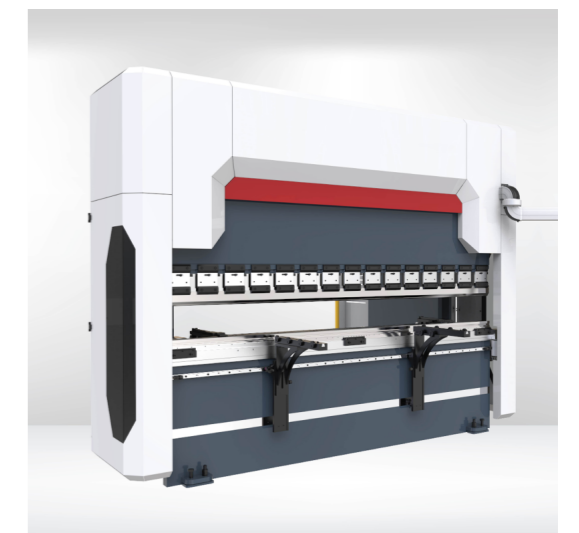
High Precision,
High Performance Press Brake Scale



MPS Technical Specifications

Type of measurement	Magnetic incremental non-contact
Measurement stroke	150 ... 2000 mm
Resolution	Standard: 5 µm (4x mode), Optional : 2,5/5/10/12,5/20/25 µm (4x mode)
Repeatability	± 5 µm
Accuracy	±15 µm
Output channels	A,A, B,B, Z,Z
Output type	TTL Linedriver (standard), Push-Pull / HLD Linedriver (optional)
Supply voltage	5 VDC or 8-24 VDC
Power consumption (without load)	< 40 mA (24 VDC)
Electrical connections	Db9 connector with 1m cable
Max. speed	< 3 m/s
Case material	Anodized aluminium
IP degree	IP 65
Operating temperature	-20°C ... +80°C
Storage temperature	-30°C ... +90°C

CNC Press Brake Machine



MLI, MT

Magnetic Linear Encoders



MT Technical Specifications

Pole pitch	2 mm, 5 mm
Accuracy	±40 µm
Dimensions	10 mm x 1,5 mm
Max. stroke	Up to 50 m single piece
Cover strip	Stainless steel
Mechanical fixing	Self adhesive and with two end caps
IP degree	IP 67
Operating temperature	-20°C ... +80°C
Storage temperature	-30°C ... +90°C

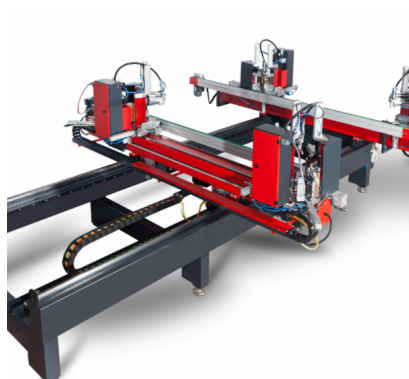
MLI Technical Specifications

Pole pitch	2 mm, 5 mm
Gap between reader head and tape (max.)	B5: 2.5 mm B2: 1 mm
Resolution	2,5 / 5 / 10 / 12,5 / 20 / 25 µm (4x mode)
Type of measurement	Magnetic incremental non-contact
Accuracy	± 15 µm
Output type	Push-Pull, TTL Linedriver, HTL Linedriver
Supply voltage	5 VDC or 8-24 VDC
Electrical connections	2,5 m cable (standard), 1 m cable with DB9 connector (optional)
Case material	Anodized aluminium
Max. speed	3 m/s with LED indicator (standard) 15 m/s without LED indicator (optional)
IP degree	IP 66
Operating temperature	-20°C ... +80°C
Storage temperature	-30°C ... +90°C

CNC Press Brake Machine



Welding Machine



Magnetic Linear Encoders Special for CNC Roll-Bending Machinery



MLC Technical Specifications

Type of measurement	Magnetic incremental non-contact
Measurement stroke	50 ... 800 mm
Resolution	Standard: 2,5/5/10/12,5/20/25 µm (4x mode)
Accuracy	± 40 µm
Output channels	A,B, / A \bar{A} , B \bar{B}
Output type	Push-Pull, TTL Linedriver, HTL Linedriver
Supply voltage	5 VDC or 8-24 VDC
Power consumption (without load)	< 40 mA (24 VDC)
Electrical connections	4 pin connector (standard), cable (optional)
Max. speed	< 3 m/s
Case material	Anodized aluminium
Mechanical fixing	Ball joints on the both sides
IP degree	IP 65
Operating temperature	-20°C ... +80°C
Storage temperature	-30°C ... +90°C

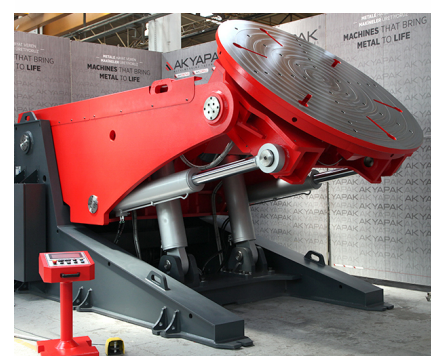
Roll Bending Machine



Pipe / Tube Bending Machine



Welding Positioner



LPC / SLPC

Linear Potentiometer



LPC / SLPC Technical Specifications

Measurement stroke	50 ... 800 mm (LPC) - 10 ... 400 mm (SLPC)
Linearity	± %0,05 (>200mm), ±%0,1 (130-200mm), ± %0,2 (75-130mm), ±%0,5 (<75mm)
Repeatability	< 0.01 mm
Resolution	Infinite
Resistance	5 kOhm, 10 kOhm (LPC) 2 kOhm, 5 kOhm (SLPC)
Resistance tolerance	± %20
Load resistance	100 kOhm min.
Recommended cursor current	< 1 µA
Permissible applied voltage	28 VDC max.
Electrical connections	4 pin connector (standard), cable (optional) (LPC) Connector or 1 m cable output (SLPC)
Displacement speed	< 5 m/s
Mechanical life	100 million movements
Case dimensions	Ø38 mm (LPC) - Ø18 mm (SLPC)
Case material	Anodized aluminium
Rod material	Stainless steel / 不锈钢
Rod diameter	Ø10 mm (LPC) - Ø5 mm (SLPC)
Mechanical fixing	Ball joints on the both sides
IP degree	IP 65
Operating temperature	-20°C ... +80°C
Storage temperature	-30°C ... +90°C

Roll Bending Machine



Guillotine Shears



Bordering Machine

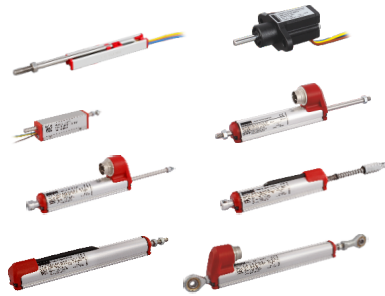


Other Production Range

Linear Potentiometers
Long Stroke Serie
(30 - 2000 mm)



Linear Potentiometers
Short Stroke - Compact Serie
(10 - 400 mm)



Linear Potentiometers
Internal Voltage -
Current Conditioner Serie
(Output 4-20mA, 0-20mA, 0-10V)



Non-Contact Magnetostrictive
Position Sensors



Non-Contact Magnetostrictive
Position Sensors
BUS Output



Magnetic Linear Encoders



Optical / Magnetic
Rotary Encoders

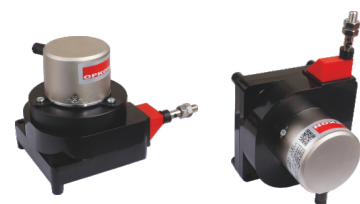


Optical Rotary Absolute Encoders
(for synchronous gearless motors)



Draw Wire Potentiometers
(5 - 10 kOhm or
4-20mA, 0-20mA, 0-10V output)

Draw Wire Encoders





WORLDWIDE US

Sales network in 6 continents and more than 40 countries

- EUROPE** : Sweden, Finland, Russia, Germany, Czech, Italy, Portugal, Spain, Bulgaria, Romania, Greece, Serbia, Bahrain, Montenegro, Macedonia, Croatia, Kosovo, Ukraine, Denmark, U.K., Netherlands
- ASIA** : China(including Hongkong and Taiwan), Korea, India, Singapore, Thailand, Phillipines, Indonesia, Malaysia, Israel, Jordan, B.A.E, Pakistan
- NORTH AMERICA** : Canada, U.S.A, Mexico
- SOUTH AMERICA** : Brazil, Argentina, Chile, Colombia
- AFRICA** : Egypt, South Africa
- OCEANIA** : Australia, New Zealand



OPKON OPTİK ELEKTRONİK KONTROL SAN. TİC. A.Ş.
Terazidere Mah. 29 Ekim Cad. No: 34
Bayrampaşa / İstanbul / TURKEY
Tel: +90 (212) 501 48 63 Pbx. Fax: +90 (212) 501 48 83
www.opkon.com.tr
info@opkon.com.tr