

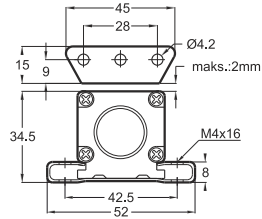
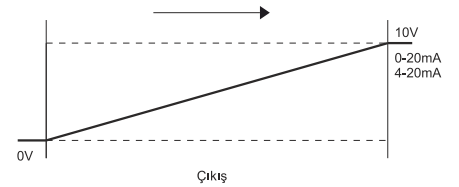
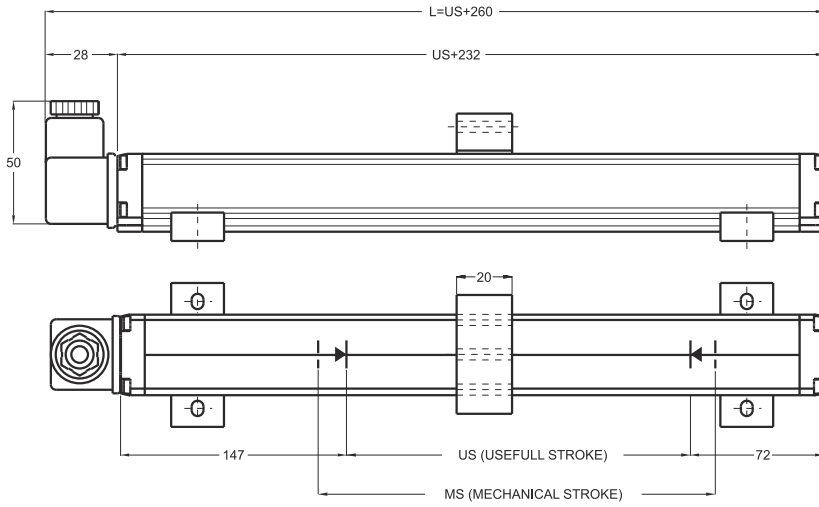
Temassız Magnetostriktif Pozisyon Sensörü

- 100 - 900 mm ölçme boyu
- 16 bit çözünürlük
- 0...10V, 0-20mA, 4-20mA çıkış
- 24 VDC besleme

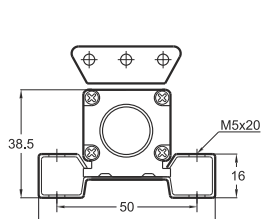


Teknik Özellikler

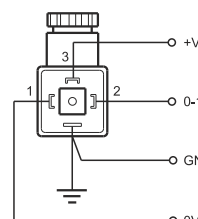
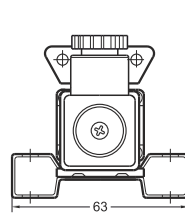
Ölçme boyu	100 ... 900 mm
Çözünürlük	16 bit (200µm)
Tekrarlanabilirlik	< 0.05 mm
Çıkış	4-20mA, 0-20mA yada 0-10V
Güç kaynağı	24 VDC ±10%
Maksimum besleme voltajı	30 VDC max.
Hız	< 10 m/s
Örnekleme	1 KHz
Maksimum tüketim	50mA
Maksimum çıkış gürültüsü	< 5mVpp
Maksimum çıkış değeri	10.5 Volt



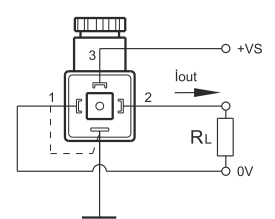
Standart bağlantı ayağı



Opsiyonel bağlantı ayağı



0-10V Çıkış



0-20mA, 4-20mA Çıkış

MSS (mm)	100	150	200	250	300	350	400	450	500	550	600	650	700	750	800	850	900
US (Usefull Stroke)	100	150	200	250	300	350	400	450	500	550	600	650	700	750	800	850	900
MS (Mechanical Stroke)	120	170	220	270	320	370	420	470	520	570	620	670	720	770	820	870	920
L (Total Length)	360	410	460	510	560	610	660	710	760	810	860	910	960	1010	1060	1110	1160

Model	Ölçme boyu	Çözünürlük	Çıkış	Konnektör / Kablo
(örnek) MSS	300	A	V10	C1
MSS	100 ... 900mm	A : 16 bit	V10 : 0-10V I04 : 4-20mA I20 : 0-20mA	C1 : 4 pinli konnektör