

## Model MPS

### Magnetic Linear Incremental Encoder

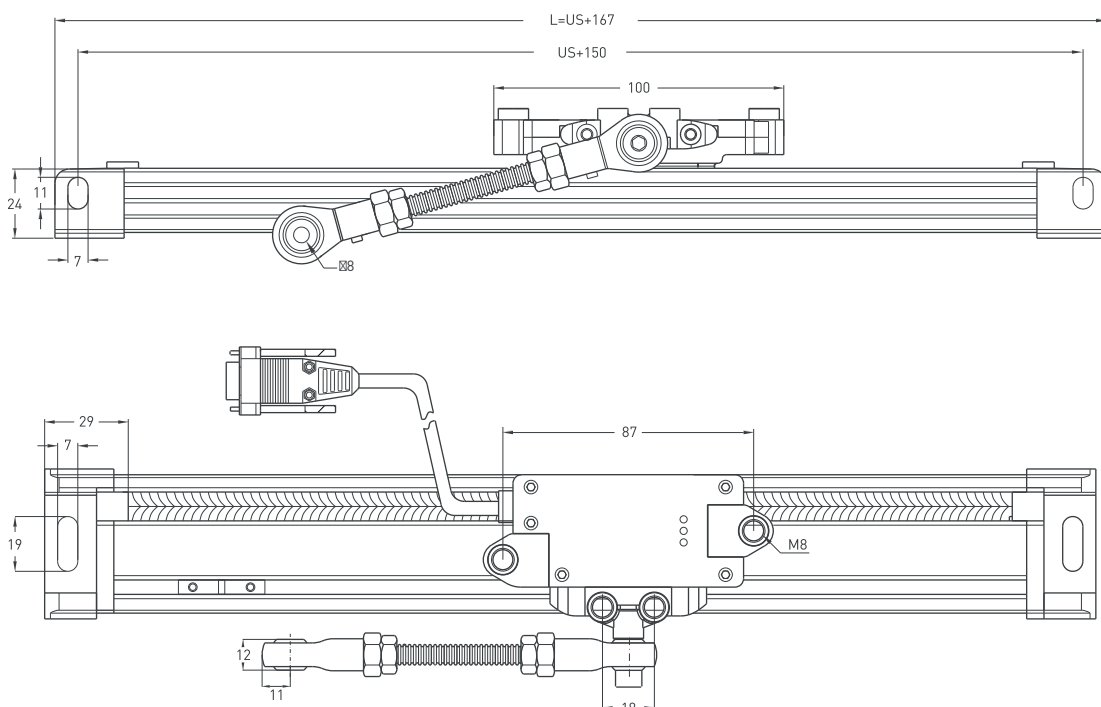
High Precision, High Performance Press Brake Scale



#### Technical Specifications

Type of measurement	Magnetic incremental non-contact
Measurement stroke	100 - 2000 mm
Resolution	Standard: 5 $\mu\text{m}$ (4x mode), Optional : 2,5 / 5 / 10 / 12,5 / 20 / 25 $\mu\text{m}$ (4x mode)
Repeatability	$\pm 5 \mu\text{m}$
Accuracy	$\pm 15 \mu\text{m}$
Output channels	A, B, Z / A, $\bar{A}$ , B, $\bar{B}$ , Z, $\bar{Z}$
Output type	TTL, Linedriver, Push-Pull, High Linedriver
Power supply	5 VDC (Standard), 8 - 24 VDC (Optional)
Power consumption (without load)	<40 mA (24 VDC)
Electrical connections	DB9 connector with 1 m cable or M16x8 pin connector
Displacement speed	<3 m/s
Case material	Anodized aluminium
Protection level	IP 65
Operating temperature	-20°C ... +80°C
Storage temperature	-30°C ... +90°C

#### Mechanical Specifications



# Model MLC

## Magnetic Linear Incremental Encoder

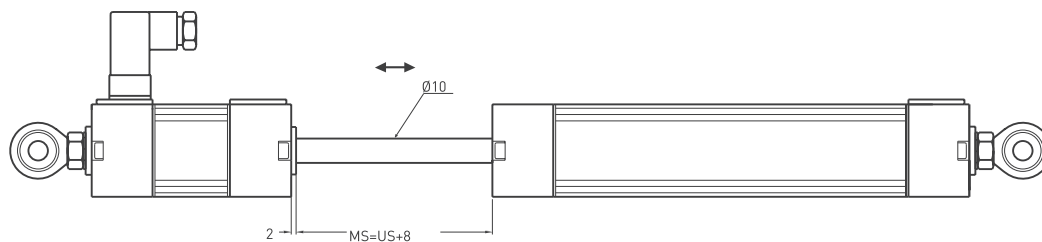
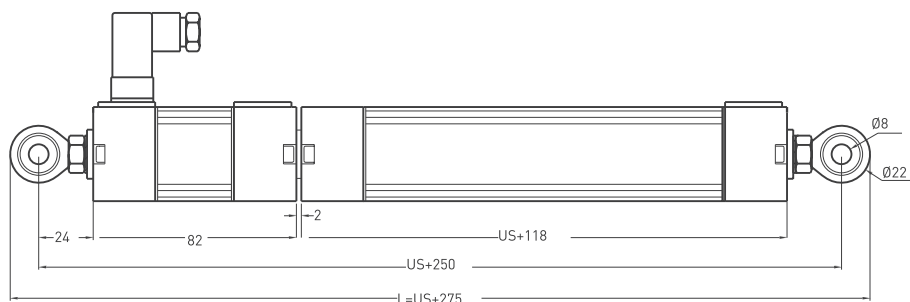
### Special for Roll-Bending Machinery



#### Technical Specifications

Type of measurement	Magnetic incremental non-contact
Measurement stroke	50 - 800 mm
Resolution	2,5 / 5 / 10 / 12,5 / 20 / 25 $\mu\text{m}$ (4x mode)
Accuracy	$\pm 40 \mu\text{m}$
Output channels	A, B, Z / A, $\bar{A}$ , B, $\bar{B}$ , Z, $\bar{Z}$
Output type	TTL, Linedriver, Push-Pull, High Linedriver
Power supply	8 -24 VDC or 5 VDC
Power consumption (without load)	<40 mA (24 VDC)
Electrical connections	4 pin connector (standard), 1 m cable (optional)
Displacement speed	<3 m/s
Case material	Anodized aluminium
Mechanical fixing	Ball joints on the both sides
Protection level	IP 65
Operating temperature	-20°C ... +80°C
Storage temperature	-30°C ... +90°C

#### Mechanical Specifications



# Model MLCS

## Magnetic Linear Incremental Encoder

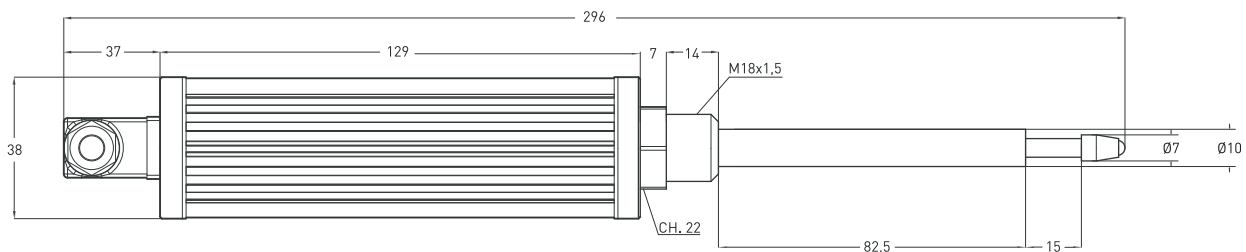
### Internal Spring Type



#### Technical Specifications

Type of measurement	Magnetic, incremental
Measurement stroke	15 mm
Resolution	1024 pulse / mm
Accuracy	± 10 µm
Output channels	A, B
Output type	Push-Pull, Linedriver, HLD
Supply voltage	8 - 24 VDC
Power consumption (without load)	< 50 mA
Electrical connection	4 pin connector
Max. speed	< 3 m/s
Case material	Anodized aluminium
Protection level	IP 65
Operating temperature	-20°C ... +80°C
Storage temperature	-30°C ... +90°C

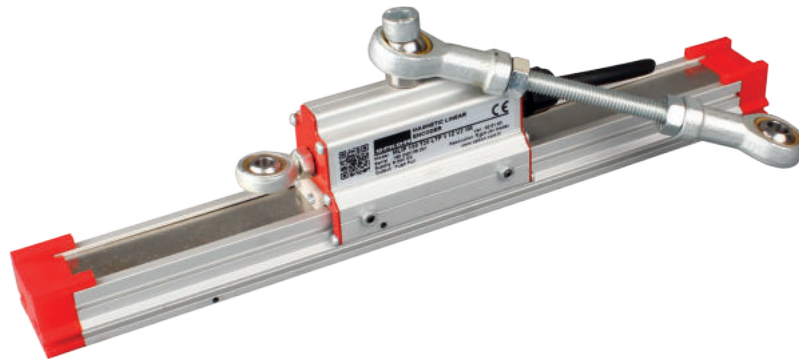
#### Mechanical Specifications



# Model MLIP

## Magnetic Linear Incremental Encoder

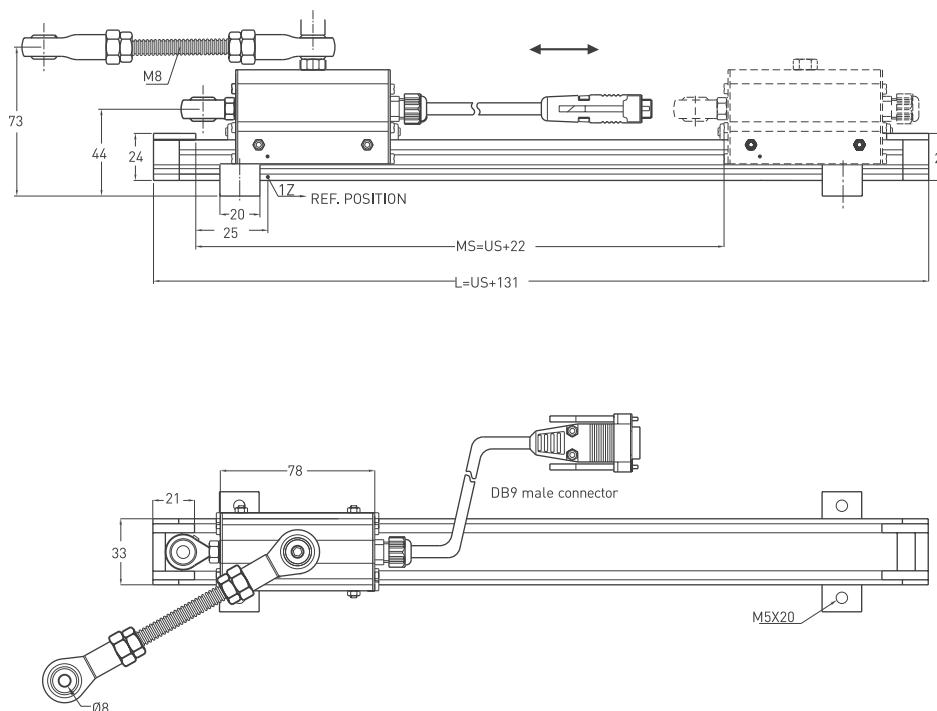
### Excellent Solution for Outdoor Applications and Stone Machinery



#### Technical Specifications

Type of measurement	Magnetic incremental contactless
Measurement stroke	50 - 50000 mm (can be extend up to 50 meters)
Resolution	2,5 / 5 / 10 / 12,5 / 20 / 25 $\mu$ m resolution (4x mode)
Accuracy	$\pm 40 \mu$ m
Output channels	A,B,Z or A, $\bar{A}$ , B, $\bar{B}$ , Z, $\bar{Z}$
Output type	Push-Pull, TTL, Linedriver or High Linedriver
Power supply	5 VDC or 8 -24 VDC
Reference position	Optional
Power consumption(without load)	< 40 mA (24 VDC)
Electrical connections	2.5 m cable standard, DB9 connector with 1 m cable
Case material	Anodized aluminium
Protection level	IP 66
Operating temperature	-20°C ... +80°C
Storage temperature	-30°C ... +90°C

#### Mechanical Specifications



# Model MLI

## Magnetic Linear Incremental Encoder

### Magnetic Band

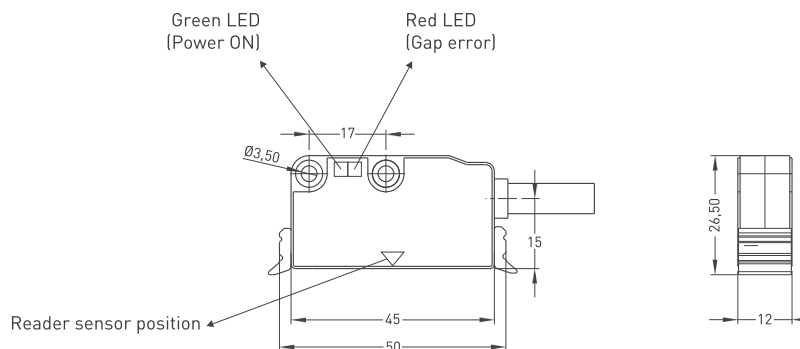
### Aluminium Profiles



MT Technical Specifications	
Pole pitch	2 mm, 5 mm
Accuracy	± 40 µm
Dimensions	10 mm x 1,5 mm
Max. stroke	Up to 50 m single piece
Cover strip	Stainless steel
Mechanical fixing	Self adhesive
Protection level	IP 67
Operating temperature	-20°C ... +80°C
Storage temperature	-30°C ... +90°C

MLI Technical Specifications	
Pole pitch	5 mm
Gap sensor/tape (max)	B5 : 2,5 mm
Resolution	2,5 / 5 / 10 / 12,5 / 20 / 25 µm (4x mode)
Type of measurement	Magnetic incremental non-contact
Accuracy	± 15 µm
Output signal type	TTL, Linedriver, Push-Pull, High Linedriver
Power supply	8 - 24 VDC (standard), 5 VDC (optional)
Electrical connections	2,5 m cable (standard), 1 m cable with DB9 connector (optional)
Case material	Zamac with nickel satin coating
Displacement speed	3 m/s with LED indicator (standard) 15 m/s without LED indicator (optional)
Protection level	IP 66
Operating temperature	-20°C ... +80°C
Storage temperature	-30°C ... +90°C

### Mechanical Specifications



**NOTE :**

-----

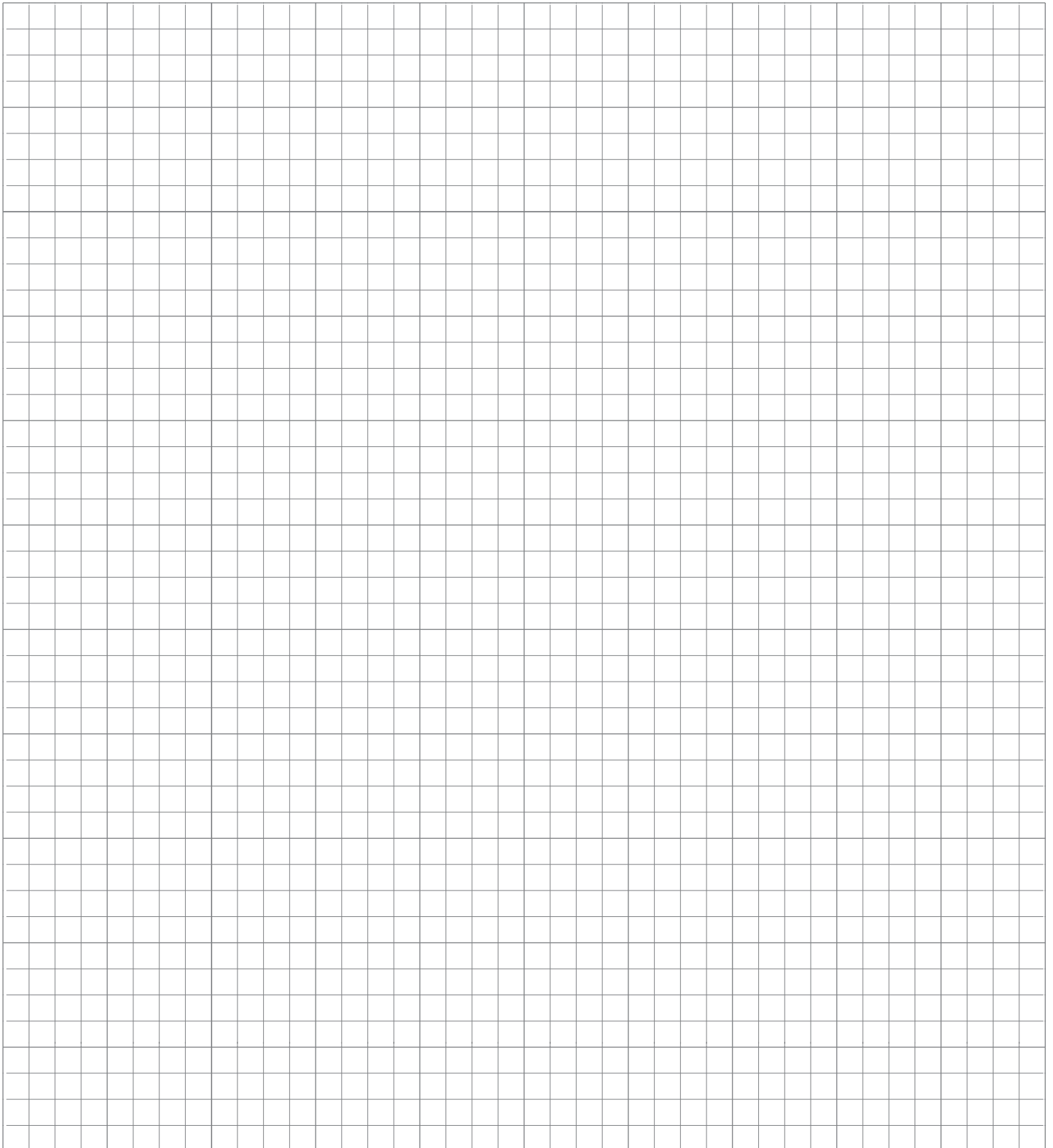
-----

-----

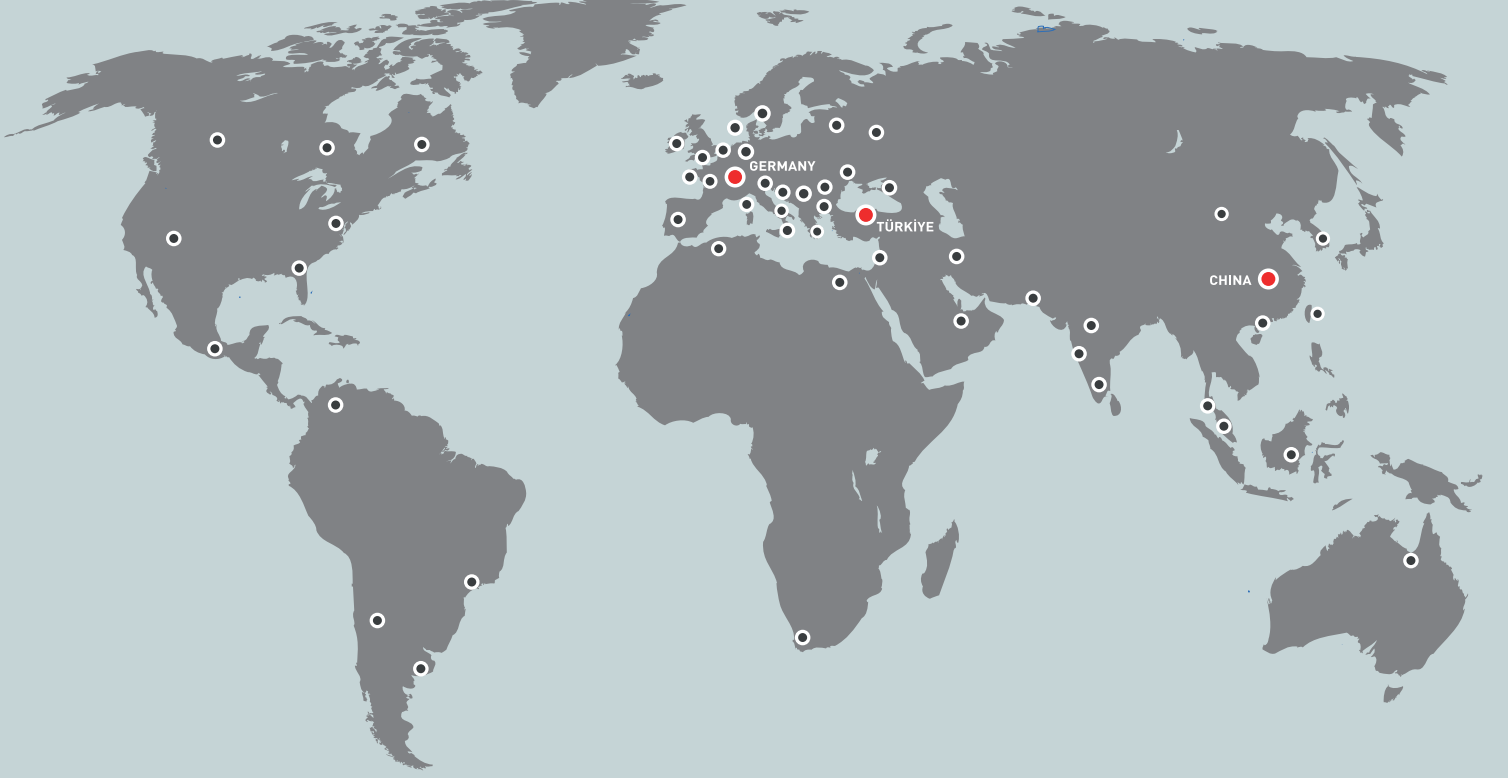
-----

-----

-----



## WORLDWIDE SALES NETWORK



### Headquarter R&D, Production

OPKON Optik Elektronik  
Kontrol Sanayi ve Ticaret A.Ş.  
Terazidere Mah. 29 Ekim Cad. No:34  
Bayrampaşa / İstanbul / TÜRKİYE

Phone : +90 (212) 501 48 63  
Fax : +90 (212) 501 48 83  
Web : [www.opkon.com.tr](http://www.opkon.com.tr)  
E-mail : [export@opkon.com.tr](mailto:export@opkon.com.tr)

### Germany Subsidiary

SENSORMARKET GmbH  
Graeffstrasse, 5,  
50823 Köln / GERMANY

Phone : +49 22159495400  
Fax : +49 22159495402  
Web : [www.sensormarket.eu](http://www.sensormarket.eu)  
E-mail : [sales@sensormarket.eu](mailto:sales@sensormarket.eu)

### China Subsidiary

DANZI Sense Technology  
(Shanghai) Co., LTD.  
Room 123 - B, F/1, No. 1000 Ziyue Road,  
Minhang District, 200240 Shanghai / CHINA

Hotline : 400 8050 889  
Phone : 021 - 64091719  
Fax : 021 - 64091713  
Web : [www.danzisensors.com.cn](http://www.danzisensors.com.cn)  
E-mail : [marketing@opkonchina.com](mailto:marketing@opkonchina.com)